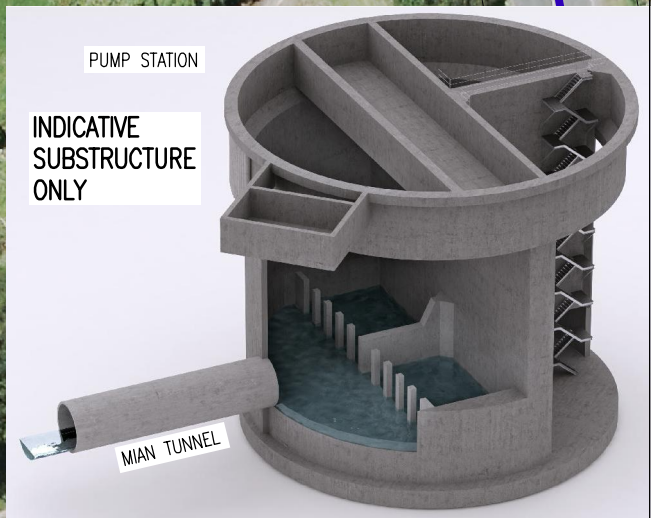
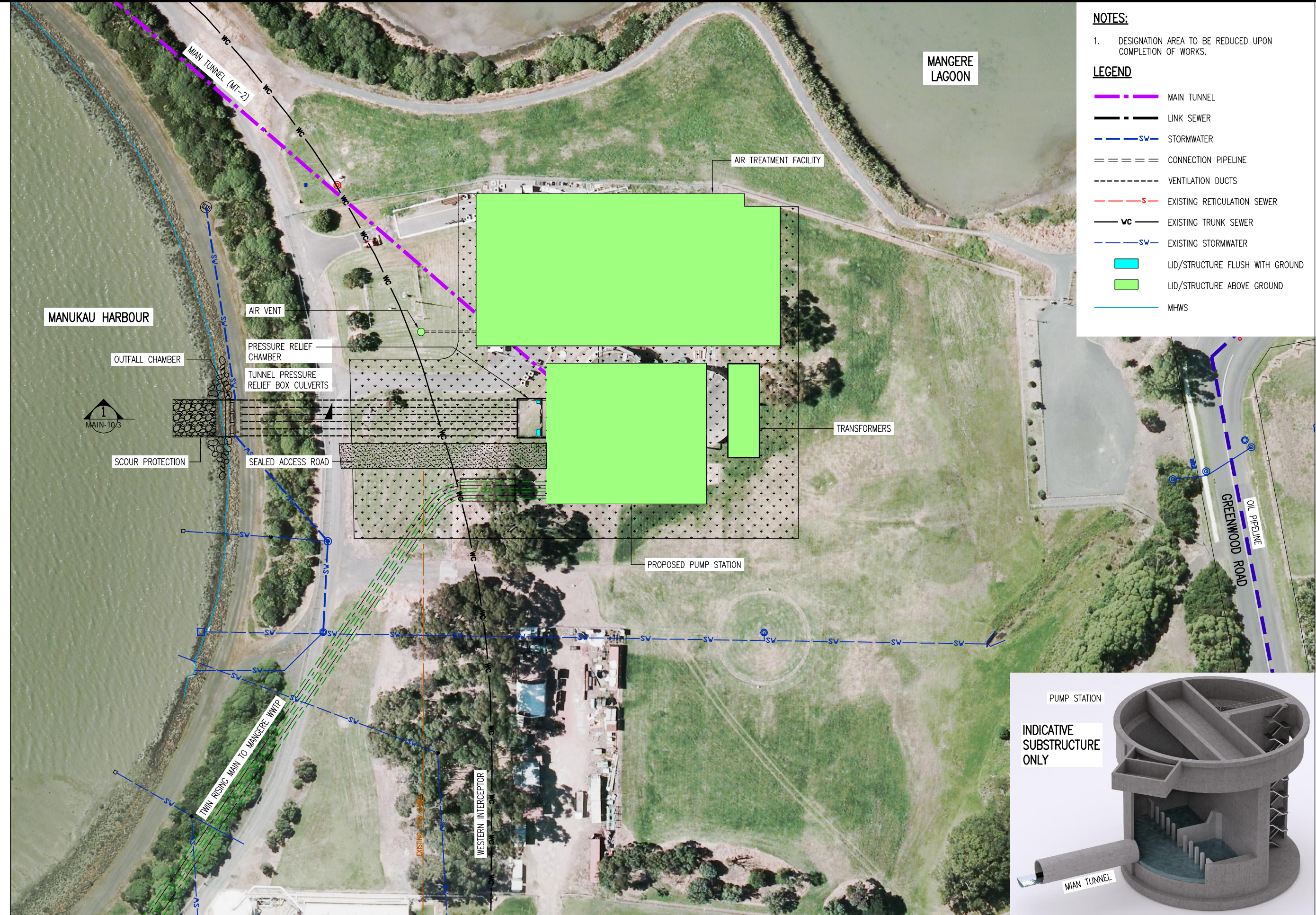


- NOTES:**
- DESIGNATION AREA TO BE REDUCED UPON COMPLETION OF WORKS.
- LEGEND**
- MAIN TUNNEL
  - LINK SEWER
  - STORMWATER
  - CONNECTION PIPELINE
  - VENTILATION DUCTS
  - EXISTING RETICULATION SEWER
  - EXISTING TRUNK SEWER
  - EXISTING STORMWATER
  - LID/STRUCTURE FLUSH WITH GROUND
  - LID/STRUCTURE ABOVE GROUND
  - MHS



Plot Date: 11-Jul-13 11:39 a.m.  
 File path: P:\0538 - Central Interceptor\04\_Drawings\4.3\_Working\AEE\Consent\General\DWG

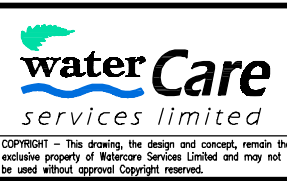
DESIGNED	NL				
DES. CHECKED	JS				
DRAWN	AP				
DWG. CHECKED	NL				
REV'D P.MGR	JS				
APP'D P.DIR	CC				
ISSUE	DATE	AMENDMENT	BY	APPD.	BY DATE
B	12/07/13	OUTFALL REVISED	AP	JQC	
A	17/08/12	CONSENT ISSUE	AP	PR	

OPERATIONS

SITE LAYOUT AND DESIGNS INDICATIVE ONLY AND SUBJECT TO CHANGE DURING DETAILED DESIGN DEVELOPMENT

ASSET MANAGER

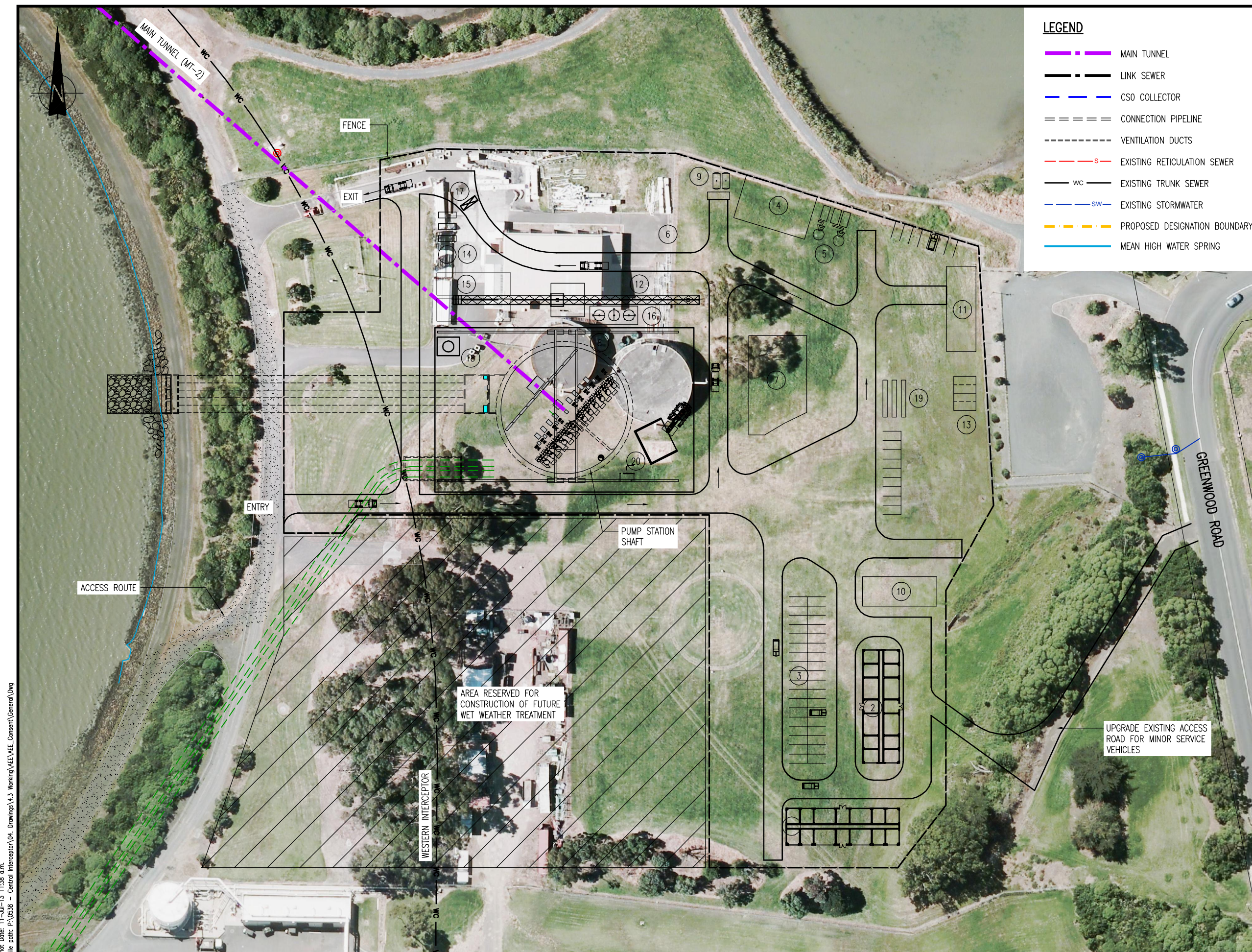
**AEE JULY 2013**



**CENTRAL INTERCEPTOR GENERAL**

**MANGERE PUMP STATION (WS3) - PERMANENT WORKS PLAN**

CAD FILE	AEE-MAIN-10.1_B	DATE	11-Jul-13
ORIGINAL SCALE	A1	CONTRACT No.	0538
1:1000 A3			
DRAWING No.	AEE-MAIN-10.1	ISSUE	B



**LEGEND**

- MAIN TUNNEL
- LINK SEWER
- CSO COLLECTOR
- CONNECTION PIPELINE
- VENTILATION DUCTS
- EXISTING RETICULATION SEWER
- EXISTING TRUNK SEWER
- EXISTING STORMWATER
- PROPOSED DESIGNATION BOUNDARY
- MEAN HIGH WATER SPRING

DESCRIPTION	
1	CONTRACTORS MAIN OFFICE
2	ENGINEERS MAIN OFFICE
3	PARKING
4	MAIN WORK SHOP
5	COMPRESSOR/GENERATOR
6	SEGMENT STORAGE AREA
7	SPOIL STORAGE AREA
8	GANTRY CRANE
9	DISTRIBUTION DIESEL SYSTEM
10	STAFF CANTEEN 1
11	STAFF CANTEEN 2
12	GROUTING PLANT
13	CONTAINER LAY DOWNS
14	CONTRACTORS ELECTRICAL SUBSTATION
15	WATER TREATMENT PLANT
16	TOWER CRANE
17	WHEEL WASH
18	COOLING TOWER
19	RAIL AND PIPE LAY DOWNS
20	MUCK BIN



Plot Date: 11-Jul-13 11:38 a.m.  
 File path: P:\0538 - Central Interceptor\04 Drawings\4.3 Working\AEE\Consent\General\DWG

ISSUE	DATE	AMENDMENT	BY	APPD.	BY	DATE
B	12/07/13	OUTFALL REVISED	AP	JQC	REV'D P.MGR	JS
A	17/08/12	CONSENT ISSUE	AP	PR	APP'D P.DIR	CC

DESIGNED	DES. CHECKED	DRAWN	DWG. CHECKED	REV'D P.MGR	APP'D P.DIR
NL	JS	AP	NL	JS	CC

OPERATIONS

SITE LAYOUT AND DESIGNS INDICATIVE ONLY AND SUBJECT TO CHANGE DURING DETAILED DESIGN DEVELOPMENT

ASSET MANAGER

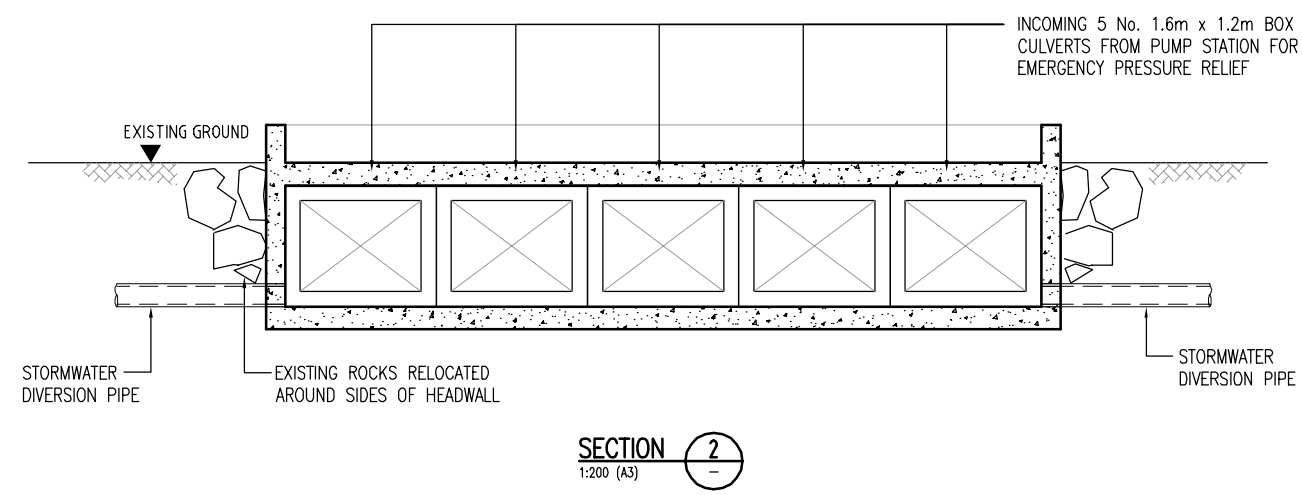
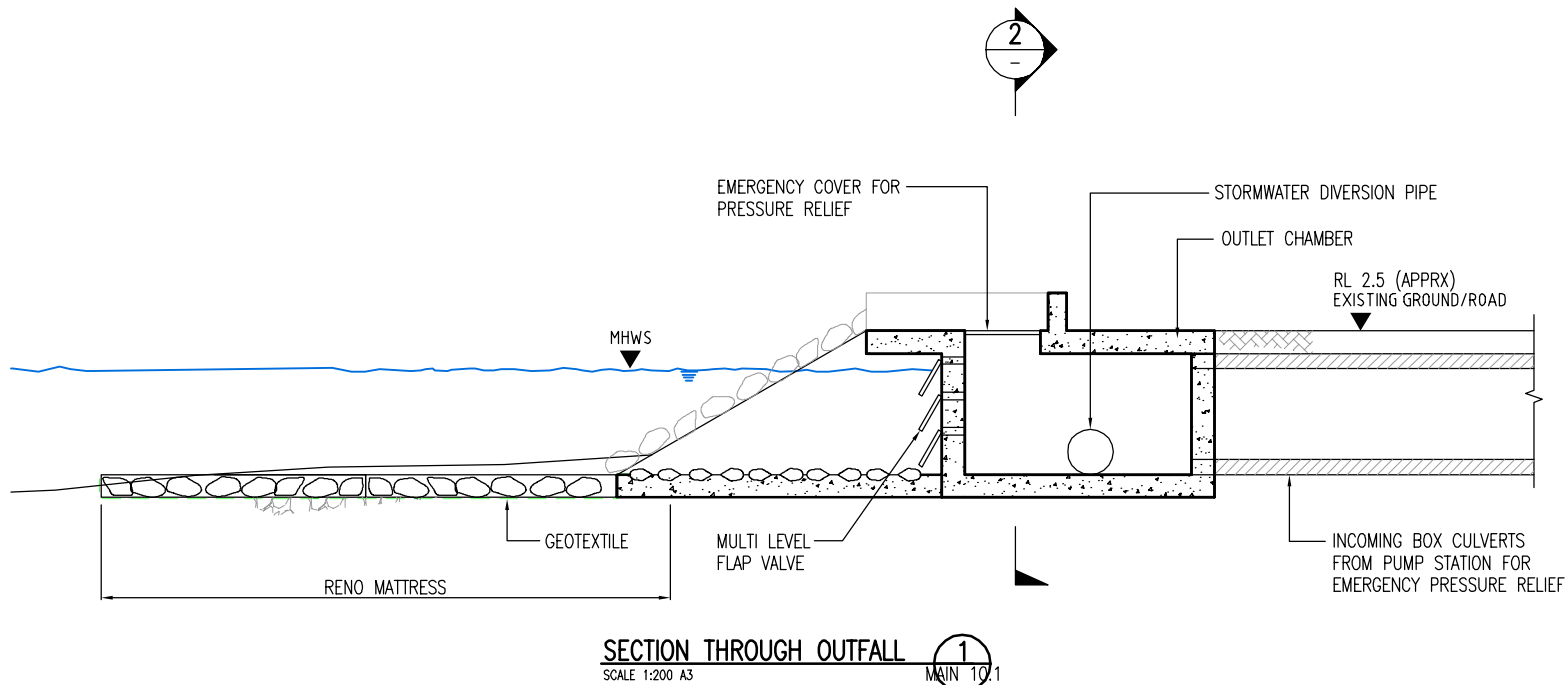
**AEE JULY 2013**



**CENTRAL INTERCEPTOR GENERAL**

**MANGERE PUMP STATION (WS3) - CONSTRUCTION WORKS PLAN**

CAD FILE AEE-MAIN-10.2_B	DATE 11-Jul-13
ORIGINAL SCALE A1	CONTRACT No. 0538
1:1000 A3	
DRAWING No. AEE-MAIN-10.2	ISSUE B



Plot Date: 11-Jul-13 3:08 p.m.  
 File path: F:\0538 - Central Interceptor\04\_Drawings\4.3\_Working\AEE\_VAE\_Concent\General\DWG

DESIGNED	NL				
DES. CHECKED	JS				
DRAWN	AP				
DWG. CHECKED	NL				
B	12/07/13	SECTIONS REVISED TO SUIT	AP	JQC	REV'D P.MGR
A	17/08/12	CONSENT ISSUE	AP	PR	APP'D P.DIR
ISSUE	DATE	AMENDMENT	BY	APPD.	BY DATE

OPERATIONS

SITE LAYOUT AND DESIGNS INDICATIVE ONLY AND SUBJECT TO CHANGE DURING DETAILED DESIGN DEVELOPMENT

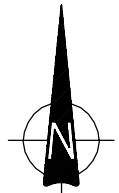
ASSET MANAGER

**AEE JULY 2013**



**CENTRAL INTERCEPTOR  
MANGERE PUMP STATION (WS3)  
EMERGENCY PRESSURE RELIEF**

CAD FILE AEE-MAIN-10.3_B	DATE 11-Jul-13
ORIGINAL SCALE A1	CONTRACT No.
1:200 A3	0538
DRAWING No.	ISSUE
<b>AEE-MAIN-10.3</b>	<b>B</b>

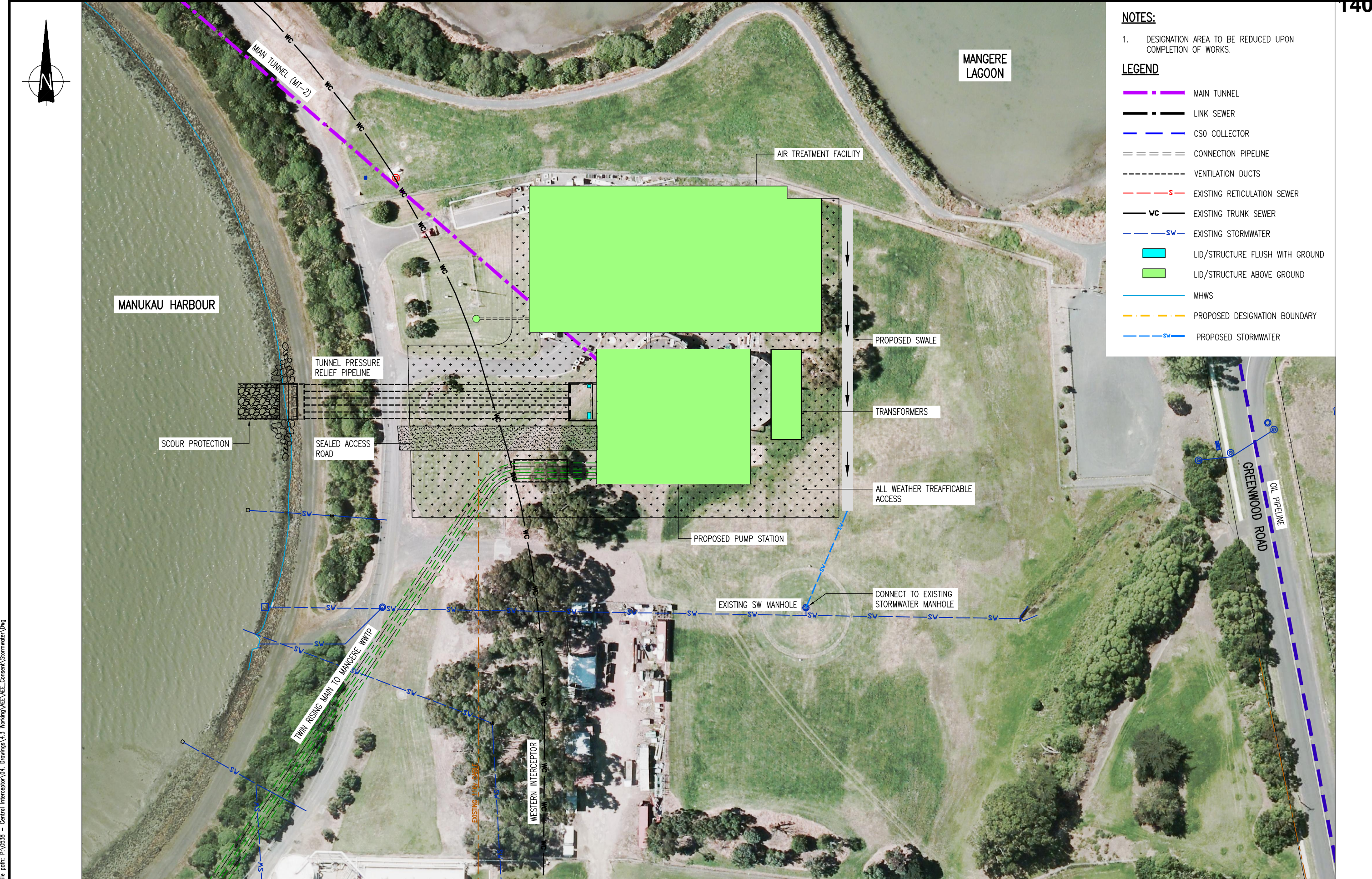


**NOTES:**

- 1. DESIGNATION AREA TO BE REDUCED UPON COMPLETION OF WORKS.

**LEGEND**

- · — · MAIN TUNNEL
- · — · LINK SEWER
- · — · CSO COLLECTOR
- = = = = CONNECTION PIPELINE
- - - - VENTILATION DUCTS
- - - - S EXISTING RETICULATION SEWER
- VC — EXISTING TRUNK SEWER
- SV — EXISTING STORMWATER
- LID/STRUCTURE FLUSH WITH GROUND
- LID/STRUCTURE ABOVE GROUND
- MHWS
- - - - PROPOSED DESIGNATION BOUNDARY
- SV — PROPOSED STORMWATER



Plot Date: 11-Jul-13 11:53 a.m.  
 File path: P:\0538 - Central Interceptor\04\_Drawings\4.3\_Working\AEE\_VAE\_Consent\Stormwater.Dwg

ISSUE	DATE	AMENDMENT	BY	APPD.	BY	DATE
B	12/07/13	OUTFALL REVISED	AP	JQC	REV'D P.MGR	JS
A	17/08/12	CONSENT ISSUE	AP	PR	APP'D P.DIR	CC

DESIGNED	NL
DES. CHECKED	JS
DRAWN	AP
DWG. CHECKED	NL
REV'D P.MGR	JS
APP'D P.DIR	CC

OPERATIONS

ASSET MANAGER

**AEE JULY 2013**

**waterCare**  
services limited

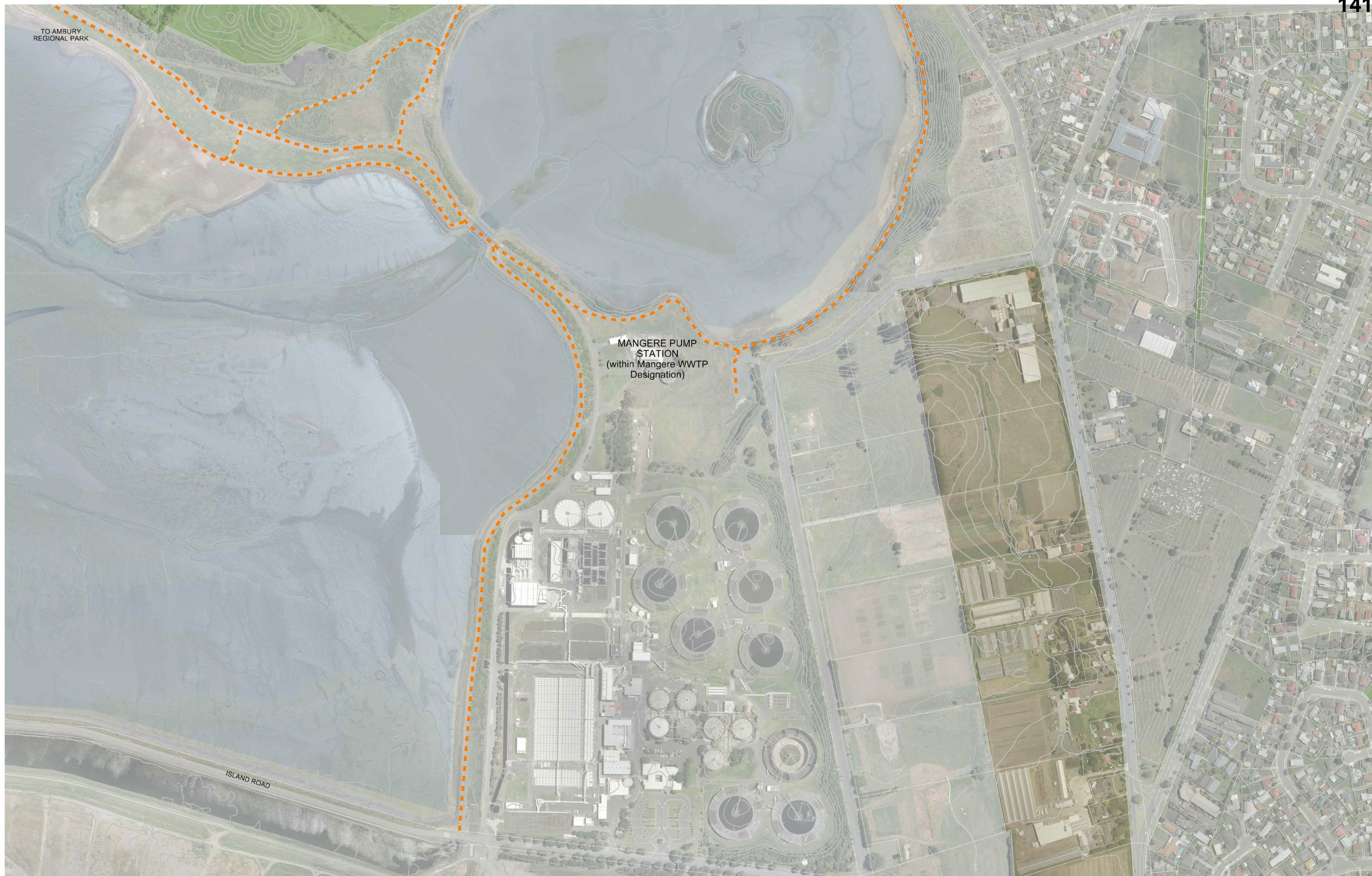
COPYRIGHT - This drawing, the design and concept, remain the exclusive property of Watercare Services Limited and may not be used without approval. Copyright reserved.

**CENTRAL INTERCEPTOR  
GENERAL**

**MANGERE PUMP STATION (WS3) - STORMWATER WORKS PLAN**

CAD FILE SW-MAIN-4	DATE 11-Jul-13
ORIGINAL SCALE A1	CONTRACT No. 0538
1:1000 A3	
DRAWING No. SW-MAIN-4	ISSUE B

A08301A\_203\_WS3\_Mangere\_Pump\_Station\_revC.dgn





View of existing outlet & WWTP from Coastal Walkway



Existing outlet structure intergrated with rock rip-rap sea wall

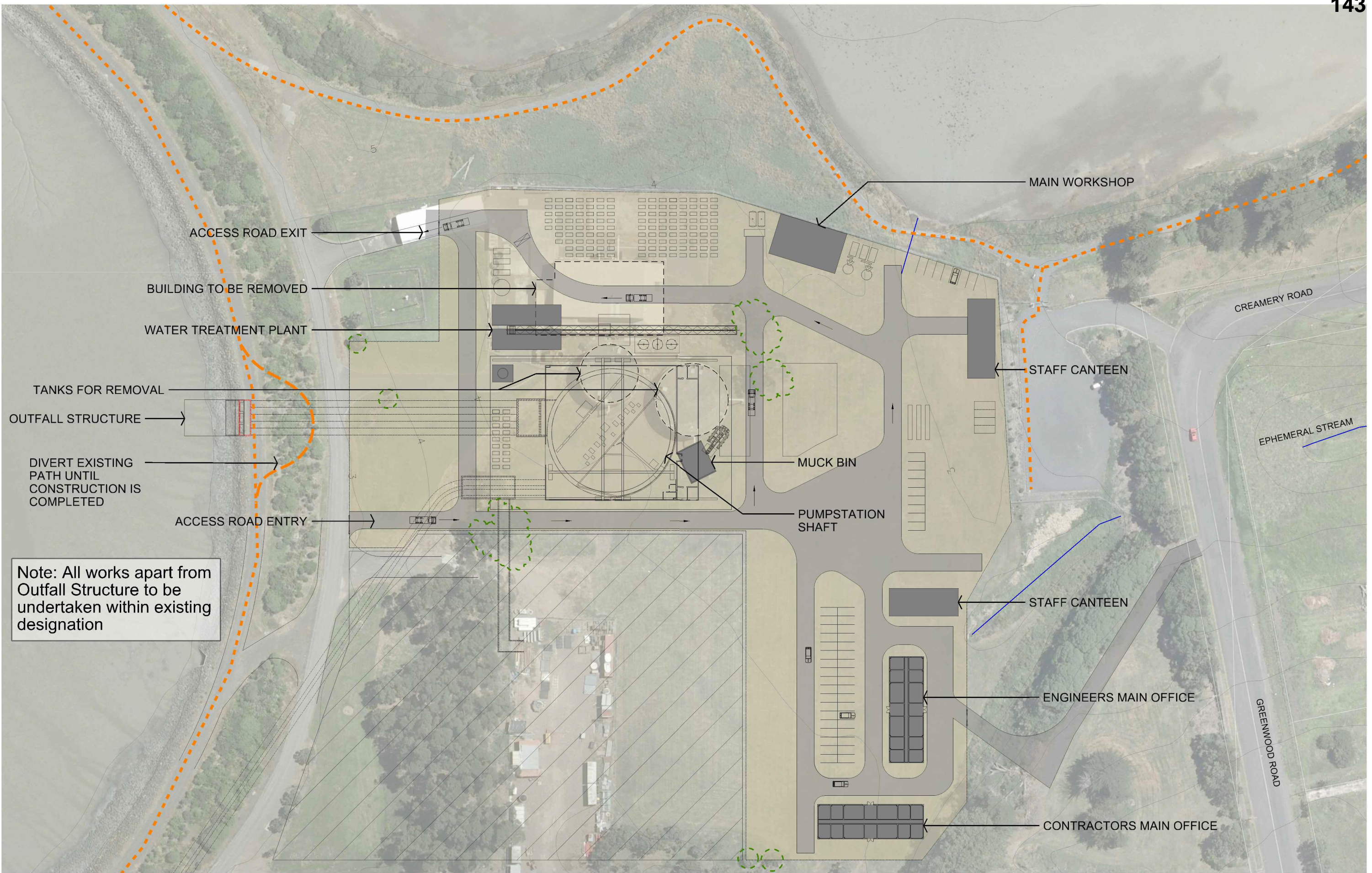


View of WWTP & Coastal Walkway



View of Proposed Emergency Pressure Relief Site

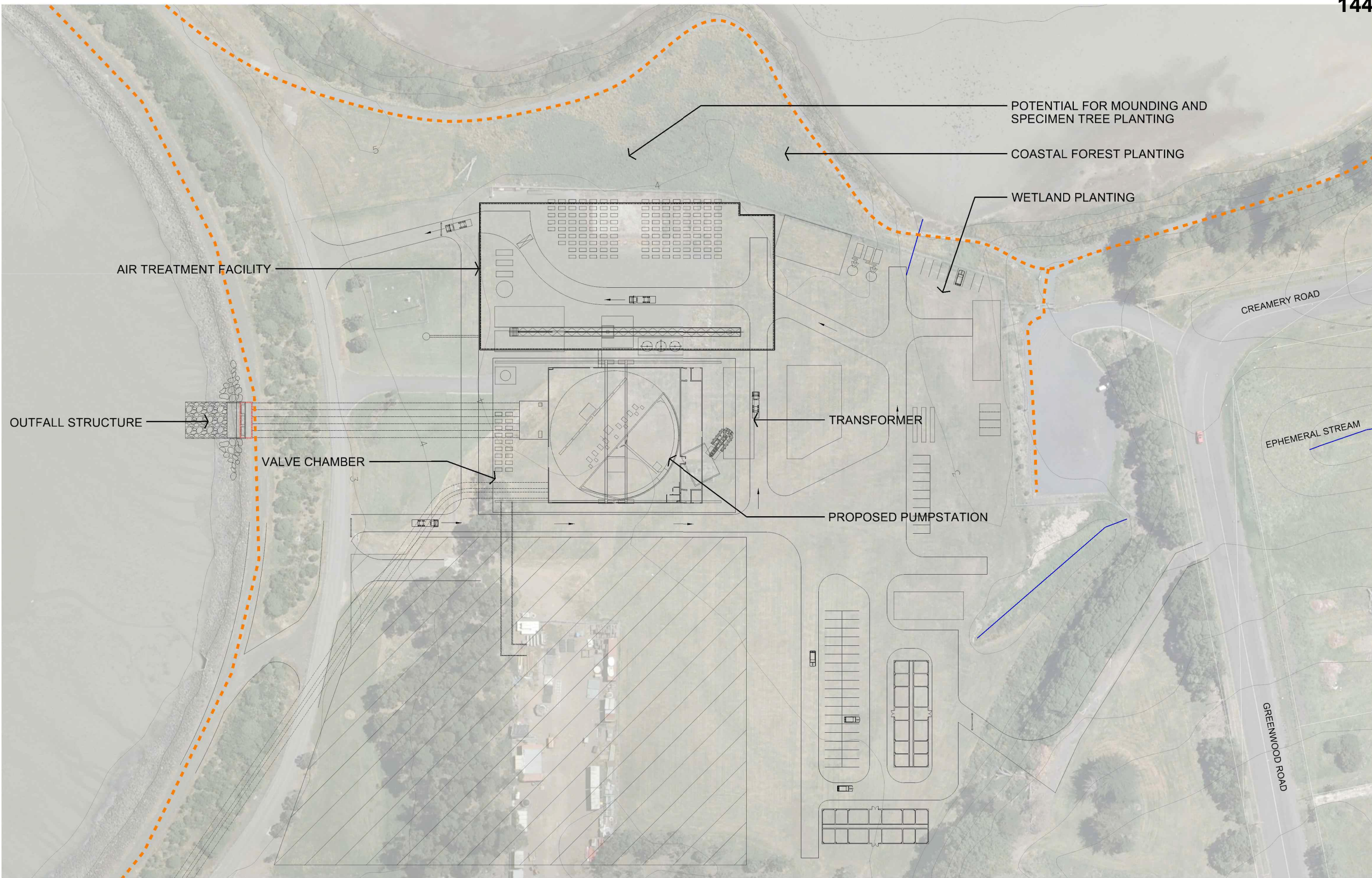
A08301A\_303\_WS3\_Mangere\_Pump\_Station\_revC.dgn



Note: All works apart from Outfall Structure to be undertaken within existing designation

Note: Site layout indicative only. Final layout dependant on Construction Management Plan

A08301A\_403\_WS3\_Mangere\_Pump\_Station\_revD.dgn



Note: Site layout indicative only. Final layout dependant on Site Reinstatement Plan



